

# Installing other Macro Collections


The program comes with three free macros, the bodice sloper to check your measurements for accuracy, a pants macro that fits almost everyone from a size 6-60, and a collar macro for adding a collar to your bodice. But one of the wonderful things about Patternmaker is that ANYONE can make a Macro with the companion program MacroGenerator and in fact more Macros are coming on the market all the time. To see what is available, go to the Patternmaker website- <http://www.patternmaker.com/PatternMaker%20Store/garments.html>

Macros install like any other program with one caveat. Download the program and save it onto your computer. Note the location where you put it! I have a folder called Downloaded Programs, and inside it I have a folder for Patternmaker files-that's where I put all of my downloaded files. I also label them according to edition, so I have Basic Blocks7, BasicBlocks7.1, etc. Then go to your Start Menu and click RUN. Browse to the Macro you want to install and click OK. ALL Macros require a password to install and passwords are CASE-SENSITIVE. My preferred option is to copy it by using the Keyboard Shortcut of CTRL+C and then pasting (CTRL+V) when asked during installation. I also have a Patternmaker file that I keep all of my Macro Passwords and my program serial number in. I just started a blank pattern file and started with Text Boxes. This way I have everything in one spot and it is easy to take with me from computer to computer or back up. And it is always with my Patternmaker files where I need it!

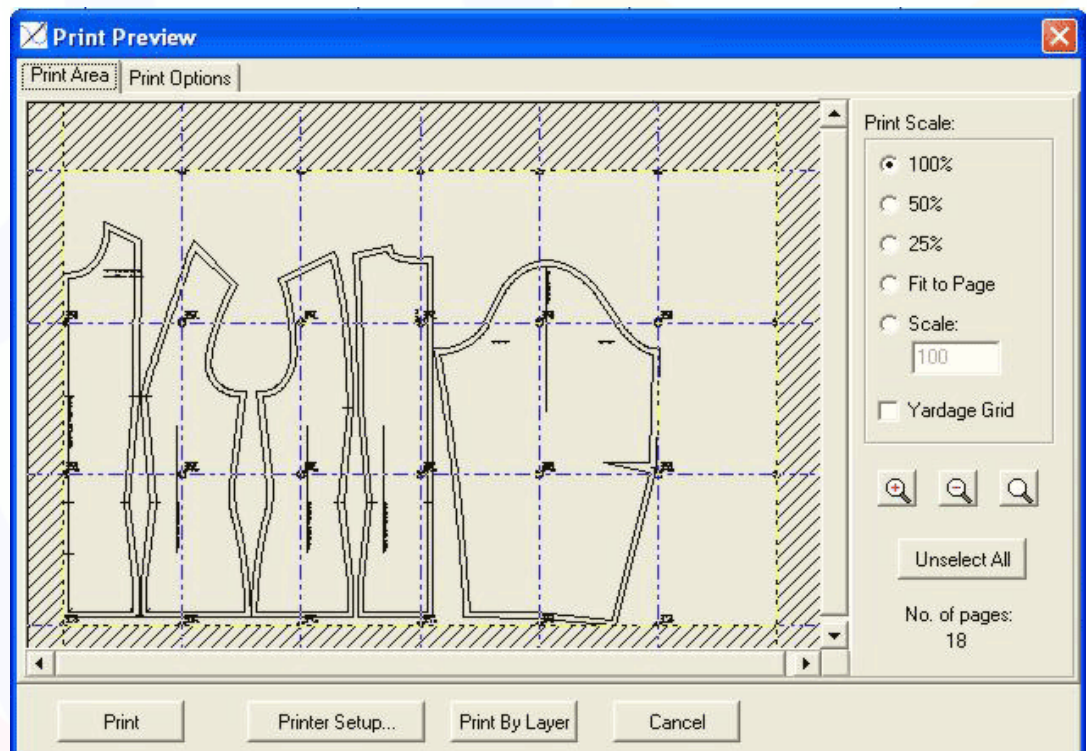
# Printing and Assembling Your Patternmaker Pattern



In the last lesson, we got all the way through to making our very first pattern on the computer! That is all well and good, but we can't very well cut it out from the computer monitor! We have to print it out and tape it together! Patternmaker will print out from any Windows printer. You don't have to have a large format printer or a specialized plotter (though they are nice!) And there are about 50 different ways to print out anything on Patternmaker. I will be covering some in depth and some will just be glossed over. If you aren't still in it, go on back to Patternmaker and **Open Bodice.pat**. Then we

want to click on the

**Print** icon.  This

will open the **Print Preview Box**. This is a really nice new feature in Patternmaker 7 that gives you great control over what you are printing out. Let's look at what is shown in the **Print Area**. The pattern is previewed and since I have

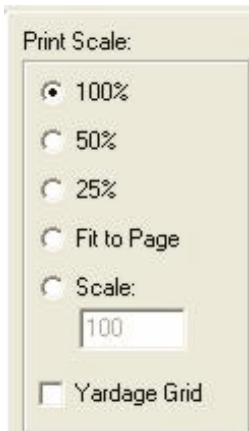


my **page grid** turned on, I can see exactly how the pattern will print. My guide tells me I will print out **18 pages**. I want to reduce the pieces of paper I use if I can, and I don't want important parts of the pattern straddling papers if I can help it. It seems that I have some extraneous pieces of paper that are just catching lines. I'm not sure if I really need them or not. One way to tell is to **Zoom In**.  Click it until you get the detail you want and then use the sliding bars to move it over the sleeve. It is just as I thought. The seam allowance just creeps over onto the next piece of paper. I can fudge that. So, **Zoom Out**  then simply click on the 3 pages on the right side of the screen that I don't want to print. They become filled with lines as I click. Notice that my **No. of pages** now reads **15**. I wonder if I would do better if I ran my paper a different way?




No problem, click on **Printer Setup**.

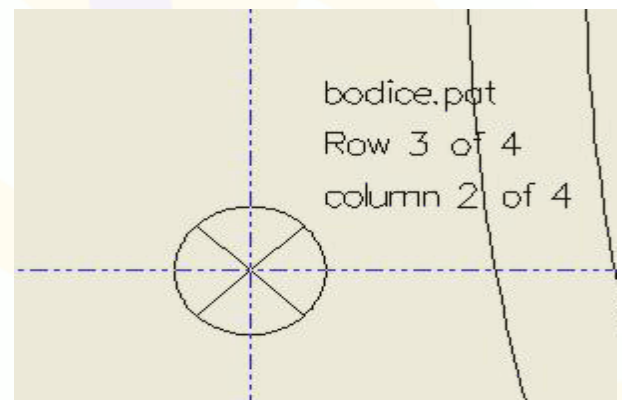
This will bring up the Windows Printer Setup Box. Simply switch the **Paper Orientation** to **Landscape** and click **OK**. You will notice that the **Paper Grid** now shows the paper in a Landscape Orientation, but no help. My **No. of Pages** now reads 16.



If I wanted simply to print this pattern out to put in a notebook, so I could see what I have, I could use the **Print to Scale** feature and easily print it out in a 25%, 50% or 75% scale, or I could simply fit to page and the computer would scale it down for me! If I had placed different sizes on different layers, I could print out one size only by selecting the **Print by Layer** button. I can even have the yardage grid print out as well, so I could just lay my taped pieces right over my fabric and cut them out the way I designed the layout. But right now I just want a pattern that I can print out and construct a garment

from, so I am going to just click on the **Print** button and send this pattern to my printer.

How are you going to get a great big pattern out of your regular PC printer, you ask? It's easy. You don't need any special paper or anything else besides a little clear tape. Once your pattern is fed to your printer and you start printing out your pages, let's go back and **Zoom In**  once again. But this time we are going to **Zoom In** on one of the corners where the



paper meets. You will see something like this. This is your key to putting together you pattern. On it you can see that this is the **bodice.pat** file. I'm looking at **Row 3 of 4** and **Column 2 of 4**. That tells me exactly where this piece of paper fits into my pattern when I put them all together. Rows go across, columns go up and down. And then you see the little circle with the X in it.  $\frac{1}{4}$  of this circle will print near each corner of the page. As you put the corners together, you line up the symbols to re-form this circle with an X and your alignment on the pattern should be good. Many of us like to use a pin at the end of each line for the center of the X, but don't obsess about it, most

of us make larger cutting errors than what will result from not a perfect line up. It isn't necessary to tape all the way across the paper. I like to tape across each corner and every place a cutting line crosses a page or any long span. That way I don't have pieces hanging apart when I've cut out my pattern pieces. If you end up doing a lot of this, you may want to consider a large format printer or a plotter. They are available from many companies, and I love mine with Tabloid size (11"x 17") {279 x 432} paper. It saves a lot of taping and many pattern pieces can fit right on one sheet of paper.

Some people also like to use banner paper. This paper comes perforated, but connected together and the printer prints right over the seams with no margins. You must use the Portrait orientation. It is available to purchase in computer and office supply stores, but your printer driver must be able to accept it. To see if you have an option for this, you need to go back into your **Printer Setup** dialog box and check on **Paper Size**. You will either have the option for **Banner Paper** or have the ability to enter a **Custom Size** of Paper. For Custom Size, the width is 8½" {216 cm} x (11 {279cm} x however many rows you have). If you have 5 rows, your width will be 8 ½"x 55" {216x1395}.



You can change what prints out on each page and how the pages print out by clicking on the **Print Options** Tab at the top. A **Page label** is what prints out in the corner. If this is distracting, or you don't need it, uncheck it. Your

**Alignment marks** are that Circle with an X. If you don't want the **file name** on each page, uncheck the box. And you can print your rows or your columns first.

So now, go back to the **PRINT AREA** tab and click **PRINT**. PM is now sending your pattern to the printer. And you have printed your first pattern!

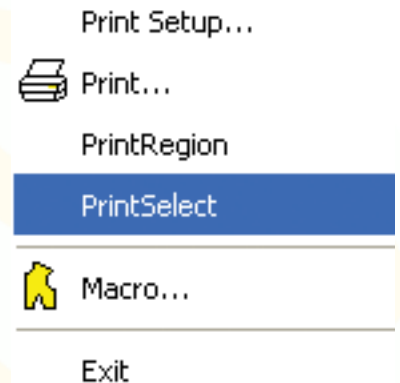
You eagerly anticipate each sheet as it comes out of the printer, but something went wrong, (as it does in any computer related task it seems! <G>) You ran out of ink, the printer didn't feed the sheet through properly, you ran out of paper, your child needs the printer for something RIGHT NOW! Don't worry! As long as you have your saved pattern, you can always print it out, or print pieces out any time you would like. If the printer jammed and you are only missing a

piece or two, the easiest way would be to go back into the **PRINT** command and simply select that page from the **Print Preview Screen**. But there are a couple of other ways to do it.

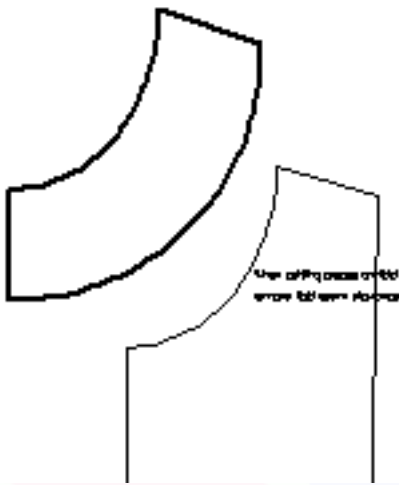
## Print Select

One is by using the **Print Select** feature. With this feature, you can select the pattern pieces you want to print. Navigate to **FILE>Print Select**. You will then see **Print Select** in your **status bar**.

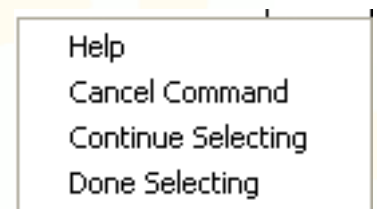
(We will be using both mouse buttons for this task). Take your mouse and move it over the Pattern piece you want to print. **LC** (Left Click) or **LMB** (Left Mouse button), and you should see the pattern piece highlight or the lines get bolder. This means that everything highlighted



has been selected. You can either **RC** (Right Click) or **RMB** (Right Mouse Button) to tell the computer you are done, or go ahead and select more pieces with an **LC** (Left Click) or **LMB** (Left Mouse button). This sequence of **LC** (Left Click) or **LMB** (Left Mouse button) to select and then **RC** (Right Click) or **RMB** (Right Mouse Button) to tell the computer you are done is the essence of using Patternmaker. [Once you establish this idea in your head and use it in conjunction with the commands in the **BLUE COMMAND BAR**, you will know most of the program!]



Once you've hit the **RMB**, a pop-up menu will come up asking you if you want **Help, Cancel Command, Done Selecting or Continue Selecting**. This is also a new feature in V7 and is designed to help people new to the program get the hang of it. It can also be very annoying to those of use who have used it for some time. It can be turned off by unchecking the **Use Context Menus** in the configuration screen. For now, click on what you'd like to do; either **Continue or Done Selecting**.



You will now see your Print Preview Screen with just the items you've

selected showing and you can re-print the missing pieces!

## **Review and Troubleshooting**

After this lesson, you should have a fairly good idea about how to print your pattern and tape it together.

Since PM simply access the Windows interface to print, it is always a good idea when dealing with printing problems to make sure that the driver you are using is the most up-to-date and that your printer is set up properly in Windows. That generally takes care of most problems. However, it does create one problem specific to Patternmaker. The lines on the printed paper are often VERY light as Windows regulates how many pixels wide a “standard” line is. If you can’t see the lines or they are so faint, and you’ve already made sure you have plenty of ink-try going back into the program and re-doing the macro with a different line width. It makes it harder to see when something is selected because it doesn’t highlight as well, but it will print out darker.